

AN EXPERIMENTAL SETUP FOR VISUALIZATIONS AND MEASUREMENTS ON FREE HYPERSONIC JETS

Marco BELAN^{*}, Mohsen MIRZAEI^{*}, Sergio DE PONTE^{**}, Daniela TORDELLA^{***}

Abstract: *The free hypersonic jets can be found in several technological applications and even in astrophysical observations. This article is mainly devoted to explain an experiment about visualizations and measurements on free hypersonic jets extending on length scales in the order of hundreds of initial diameters and traveling in a medium not necessarily made of the same gas of the jets. The experiments are performed by means of special facilities where the jet Mach numbers and the jet-to-ambient density ratios can be set independently of each other, what permits the investigation of a wide parameters range in the relevant physics. The Mach number of the jets ranges from 5 to 20 and the jet-to ambient density ratio, which plays an important role in the jets morphology, can be set from 0.1 up to values exceeding 100. The present setup produces the jets by means of a fast piston system (for high Mach numbers) or injection valves (for low Mach numbers), both coupled with de Laval nozzles. The visualizations and measurements are based on the electron beam technique: the jets are weakly ionized, then a fast CMOS camera captures images that are analyzed by image processing techniques. A sample of the results obtained by this experimental system is included at the end of this work.*

1 INTRODUCTION

The term "free hypersonic jet flow" is the name given to the fluid dynamics phenomenon produced by a jet exhausting at hypersonic velocity in a surrounding unbounded stationary medium. In the last decades, hypersonic jets have received much interest from researchers because of their importance both in basic fluid dynamics and in applications for aeronautical and mechanical industries. These extremely collimated flows can also be observed in natural phenomena such as the young stellar objects (YSO). The literature about these topics is huge in numerical simulations and experiments, even just the fundamental works are too numerous to be cited here. Nevertheless, aero-and astronomical applications are mainly focused on the jet near field, on jet control and jet-body interactions. In the astrophysics field the scenario is different, because many observational data and numerical simulations deal with long scale jets; however, also in astrophysics the experimental results deal in general with short jets, as pulsed, short convergent flows of plasma or jets created by laser ablation of shaped targets [1, 2, 3]. In general it's hard to find experimental works about the long scale behavior of hypersonic jets evolving in an external medium that may consist also in a gas different from the one of the jet.

The present experiment was conceived in such a way as to include the study of natural phenomena, i.e. the stellar jets known in astrophysics, which can have lengths in the order of hundreds, even thousands, initial diameters. In these jets, several physical parameters, expressed as non-dimensional similarity numbers, affect the physical behaviour; in the long term evolution, Mach number, jet-to-ambient density ratio, Reynolds number and heat flow numbers are in general important. In particular, in a stellar jet Reynolds number and temperatures can reach huge values, impossible to scale in a laboratory, whilst the other crucial parameters, namely the Mach number and the jet-to-ambient density ratio, can be matched in a real experiment, like the one presented in this work. A long-standing issue about stellar jets was also the possible effect of magnetic fields on the jets morphology, but this problem is not

^{*} Marco Belan, Dipartimento di Ingegneria Aerospaziale, Politecnico di Milano, Italy, belan@aero.polimi.it

^{*} Mohsen Mirzaei, Dipartimento di Ingegneria Aerospaziale, Politecnico di Milano, Italy, mirzaei@aero.polimi.it

^{**} Sergio de Ponte, retired, formerly Dipartimento di Ingegneria Aerospaziale, Politecnico di Milano, Italy, deponte@aero.polimi.it

^{***} Daniela Tordella, Dipartimento di Ingegneria Aeronautica e Spaziale, Politecnico di Torino, Italy, daniela.tordella@polito.it

considered in the present study because our experiment has been designed to investigate the universal phenomenology in newtonian dynamics, regardless of the presence of electromagnetic forces.

In this article we describe an experiment which is about visualizations and measurements on hypersonic jets extending on length scales in the order of hundreds of initial diameters and traveling in a medium not necessarily made of the same gas of the jets. By our experiment, the Mach number M and the jet-to-ambient density ratio $\eta = \rho_j/\rho_a$ can be set independently each other to find the effect of each parameter on the jet behaviour. The Mach number of the jets ranges from 5 to 20; the density ratio η , which plays an important role in the jets morphology, can be set from 0.1 up to values exceeding 100. These two parameters are in similitude with astrophysics parameters in the hydrodynamic limit. As a consequence of the setup, the Reynolds number cannot be set independently; it ranges from 10^4 to $5 \cdot 10^5$. The plan of the paper is the following: in Section 2 we present the apparatus setup, Section 3 is about calibration methods and measurement techniques, Section 4 is dedicated to some experimental results, and the conclusions are drawn in Section 5.

2 EXPERIMENTAL SETUP

The facilities presented here are designed and built specifically for the generation and display of hypersonic jets. The first version of this system was already employed to study the properties of highly underexpanded jets, making use of truncated nozzles and color CCD cameras, detailed information can be found in the works by Belan et al. [4, 5, 6, 7]. In present work the system was reconfigured, by adding and improving devices for the present purpose, i.e. long scale jets, pressure matched or nearly matched.

2.1 NOZZLES

The jets under study are generated by de Laval nozzles, specially designed for monoatomic gases flows. The gas acceleration inside an ideal nozzle of this kind working under matched conditions follows the known formula of one-dimensional isentropic flow:

$$\frac{p_0}{p_j} = \left(1 + \frac{\gamma - 1}{2} M^2\right)^{\frac{\gamma}{\gamma - 1}} \quad (1)$$

where p_0 is the stagnation pressure and p_j is the pressure of the gas at the nozzle exit. The set of nozzles used in this experiment (figure 1) was designed taking into account the real gas properties, so that the ideal pressure ratios were corrected by numerical calculations of boundary layer and heat exchange. The resulting pressure ratios are slightly different from the corresponding ideal ratios, and are reported in table 1. All the nozzles have the same converging section and throat (diameter=2mm), whilst the diverging section depends on the design Mach number, the relevant output diameters are also reported in table 1.

Mach Number	p_0/p_j	output diameter [mm]
5	270.3	6.3
10	6.667×10^3	24.0
15	4.762×10^4	71.4
20	1.786×10^5	121.9

Table 1: Pressure ratios at matched conditions for different Mach numbers

Obviously, the generation of a high Mach number jet in an ambient at atmospheric pressure would require too high stagnation pressures. Therefore, to obtain the pressure ratios indicated in table 1, especially for higher Mach numbers, it is necessary to combine a decrease in ambient pressure and an increase in stagnation pressure, so that the best solution is to use a vacuum chamber together with a driving system able to compress and heat the gas to the required level. The pressure level in the environment at the nozzles output is obtained by means of a vacuum vessel, purposely designed. The

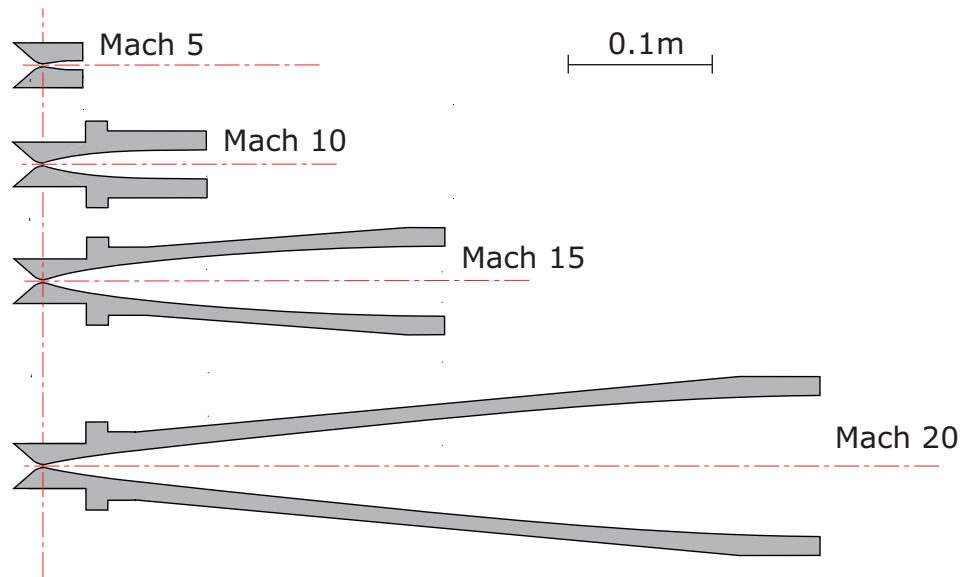


Figure 1: The set of nozzles used in this experiment (longitudinal sections)

stagnation pressures are obtained by means of a piston system at the higher Mach numbers and an injector at the lower Mach numbers.

2.2 VACUUM VESSEL

The jets under study are created inside a modular vacuum vessel, with a maximum length of 5m and a diameter of 0.5m. The vacuum is obtained through two vacuum pumps, a lobe pump and a vane pump in cascade configuration, these two devices are capable to lower the internal pressure down to 0.5 – 1 Pa. All parts in the vessel are designed according to the correct principles of vacuum technology [8]. The vessel diameter is much larger than the jets diameter, so the lateral walls effects are negligible and the jets can be considered as free jets until they hit the vessel's end. The required ambient pressure inside the vessel is obtained by means of a valves system which sets the desired ambient density (at pressures in the range 1.5 to 100 Pa) using a gas in general different from the jet gas. Pressures inside the vessel are monitored by means of two 0.25% accuracy transducers, ranging from 0.01 to 10 Pa and from 0.1 to 100 Pa. The full version of the vessel (figure 2) is composed of three cylindrical sections (2,3,4) plus a head and a tail section (1 and 5). The head segment has a port for the connection of an electron gun, an optical window for a camera and service ports for vacuum pump, ambient gas inlet and electrical connections. Also one of the intermediate sections is provided with similar ports. The modularity of the apparatus involves the considerable advantage of fitting the total volume and length depending on the needs of the individual tests: a larger size is needed to monitor the development of high Mach number jets, because of their larger diameter, in such a way as to follow the jet evolution over a large number of diameters. The sample results presented in this work are obtained by means of a 3-sections setup made of sections 1,2 and 5, where the useful internal vessel length is 2.46 m.

2.3 FAST PISTON SYSTEM

Each de Laval nozzle operates at a single nominal Mach number (slight adjustments are possible), which is obtained by imposing a given pressure ratio between the compressed gas to the ambient pressure. At the higher Mach numbers considered here ($M \geq 10$), the apparatus which feeds the nozzles must be able to increase significantly the enthalpy of the gas, while reaching the desired stagnation pressure and temperature. For this purpose, we use a purely mechanical system, a fast piston system purposely designed, which compresses the jet gas to stagnation pressure in the 0.1 to 0.7 MPa range. It has an annular shape and it slides between two coaxial cylinders, as shown in figure 3. The piston is provided with a forward cylindrical extension having a set of ports. The inner cylinder is connected to the nozzle inlet by a second set of ports. The two port sets form a valve system which is closed during the piston run, and open when the compressed gas reaches the desired stagnation conditions. When the piston

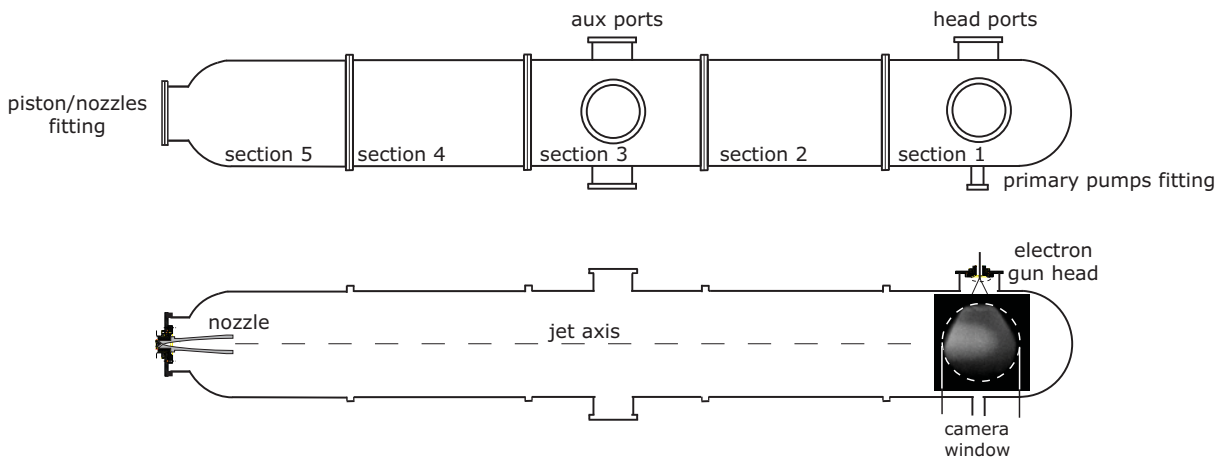


Figure 2: Vacuum vessel and experiment setup drawn in full configuration. Top panel: top view. Bottom panel: longitudinal section. The camera window, depending on optical port size and lens in use, is the actual test region.

reaches this position, the two sets of ports match each other and the compressed gas flows into the nozzle. The piston is moved by compressed air, it is normally held by an electromagnet and the starting time can be programmed on an electronic timer. The proper use of the piston requires well defined procedures for timing and loading of the jet gas, they are described in the following section. Load pressures are measured by means of 1% accuracy transducers. A separate transducer is available to check stagnation pressures: when needed it can be assembled in place of the nozzle. The resulting repeatability of the jets at each piston run is very good. Of course, the valves require a finite time to pass from the closed to the open condition; therefore the jet mass flow Q has an increasing and a decreasing phase. At the end of compression run, owing to the valves opening, the outflow increases to a maximum value, which is in the order of the mass flow of the same nozzle under steady conditions, then it diminishes as the residual gas contained in the piston is used up. Figure 4 shows a typical gas injection curve.

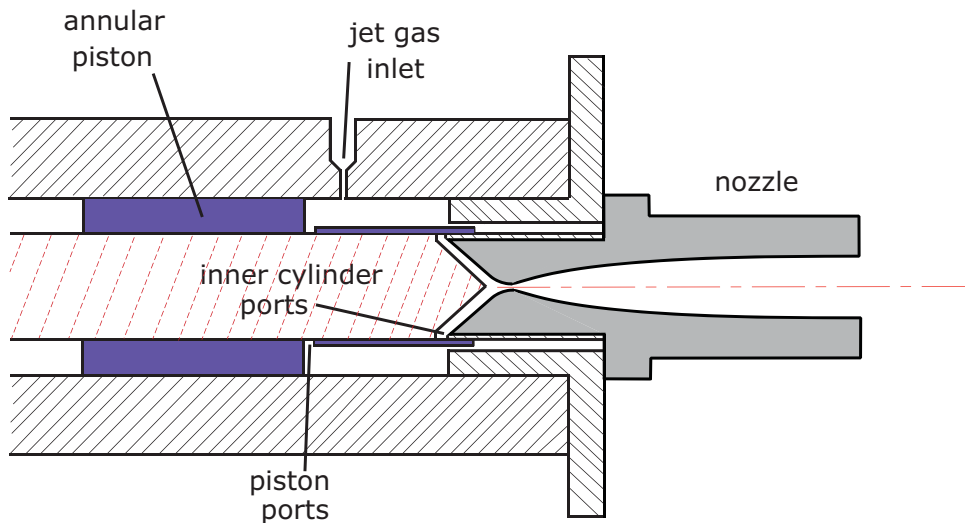


Figure 3: Longitudinal section of the fast piston system, here connected to the Mach 10 Nozzle

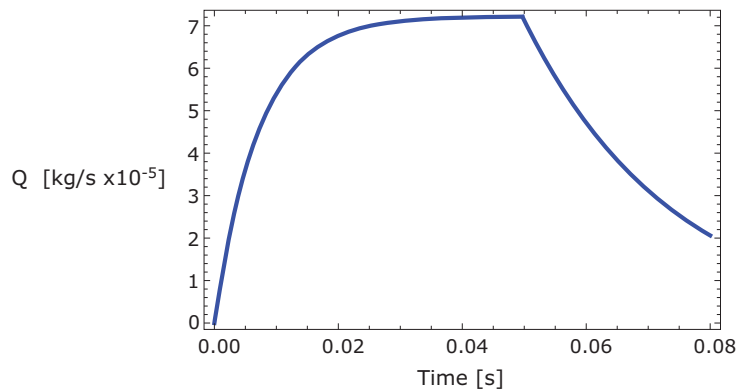


Figure 4: Jet gas injection: an example of mass flow vs time for an Helium jet at Mach 10

2.4 JET GAS INJECTOR

At the lowest Mach number considered here, the pressure ratio is so low that the piston system cannot afford it, because of leakages and frictional effects. The nominal pressure ratio for Mach 5 is about 270: this means that, for example, a typical ambient pressure in the vessel of 10 Pa, equal to the jet pressure p_j under matched conditions, would require a stagnation pressure p_0 of 2700 Pa, too low to reach after a compression run. To reach values of p_0 in this range we replace the piston with a direct injection system which drives the required low pressure gas into the relevant nozzle. This device receives the jet gas by a set of fast solenoid valves, controlled by an electronic timer. The input pressure is set by extra devices, described in the procedures section. Figure 5 shows a simple sketch of the system, which is usable also with the Mach 10 nozzle.

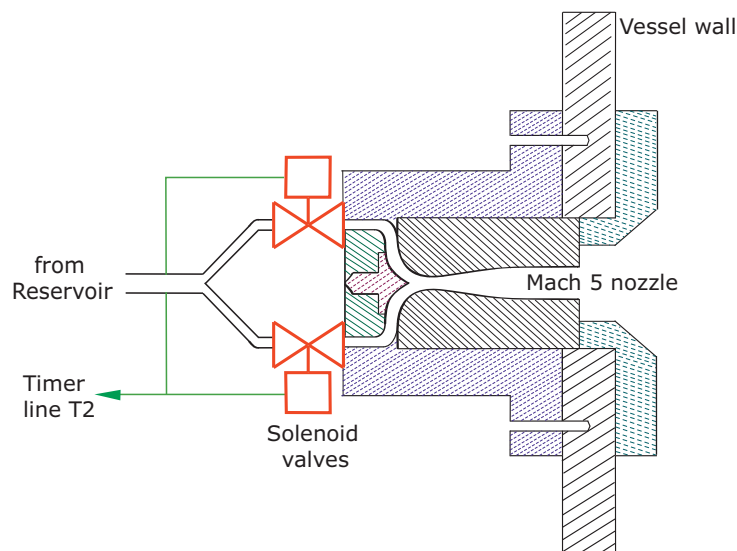


Figure 5: Longitudinal section of the injection system for Mach 5

2.5 VISUALIZATIONS AND MEASUREMENT DEVICES

The visualizations and measurements are based on the electron beam method. To this purpose, an electron gun was specifically designed and built in the laboratory, thanks to the design notes available in literature [9]. This electron gun creates an adjustable beam, up to 2 mA at 20 kV, and it is equipped with a deflection system to create an electron sheet. This device operates at very low pressures thanks

to two turbomolecular pumps. The electron sheet intercepts the jet under test, so that the absorption of light by a population of gas molecules raises their energy level to a brief excited state. As they decay from this excited state, they emit fluorescent light [10]. This fluorescent light generates a plane fluorescent section of the flow and images of the fluorescent zone can be acquired by different kinds of cameras, including intensifiers, depending on the experiment to be performed. The sample results shown in the last section are acquired by a fast CMOS camera (Phantom V5.1) which captures 512x512 or 768x768 monochromatic images at frame rates of 2000 to 5000fps. The camera and the electron gun can be mounted on several ports and optical windows, in the present setup they are mounted on the head section (see figure 2). Besides visualizations, gas densities and structure velocities can be measured by image processing. In particular, the values of the gas density along an image can be obtained by the well known relation between light intensity and gas density [11, 12], taking account carefully of the gas species involved in the measurement. Measurements of velocities can be obtained by standard correlation techniques [13], applied to the typical macroscopic structures appearing in the jet morphology, such as the head bow shock, secondary moving shocks or expansions and mixing layers instabilities.

3 CALIBRATION AND MEASUREMENT TECHNIQUES

In each run at a given Mach number, a pair of gases is selected for jet and ambient. The available gases are helium, argon, xenon and air, only the first three ones are used for the jet since the nozzles are designed for monoatomic gases. The required ambient inside the vessel is obtained by means of a valve injection system which sets the desired ambient density (at pressure in the 1.5 to 20 Pa range) by using a gas in general different from the jet gas.

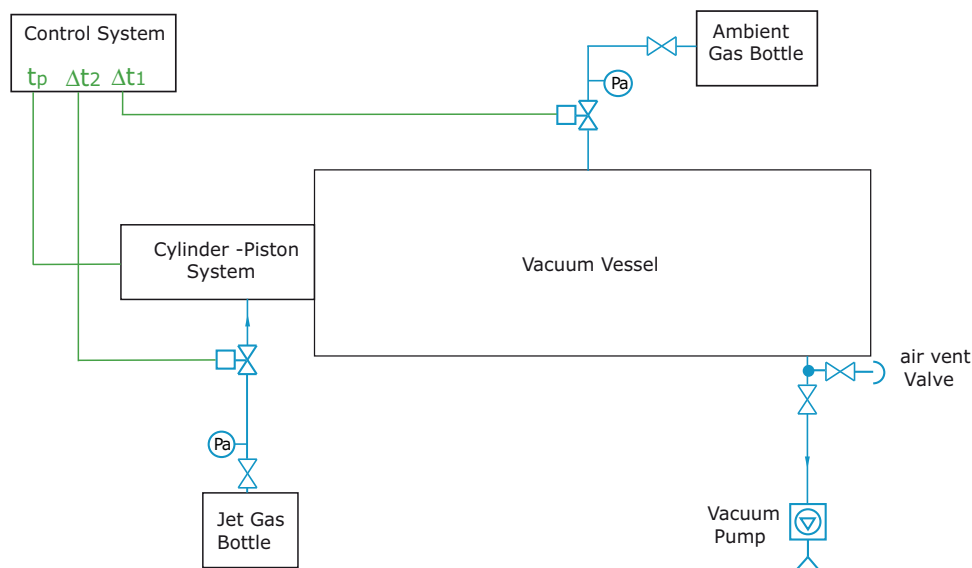


Figure 6: General diagram of the system controls and connections

In the general (*standard*) procedure two solenoid valves must be controlled; one is connected to the vacuum vessel (ambient gas valve) and another one to the fast piston system (jet gas valve), as shown in figure 6. They are operated in sequence, after the adjustment of the time intervals Δt_1 and Δt_2 in the electronic timer: Δt_1 is the opening time of the first valve which lets ambient gas enter the vessel and Δt_2 is the opening time for loading jet gas in the piston system, immediately after them a third timer stage t_P acts and piston moves (magnet releases), until the compressed jet gas is injected to the nozzle. The electron gun is turned on before starting the sequence, and the camera stays always on recording mode, and is stopped by a manual post-trigger, retrieving the movie in camera RAM after the experiment. The relevant timing diagram is shown in figure 7.

In the sequence described above, the pressure inside the vessel increases in a characteristic way, shown as a sample in Figure 8, and this curve turns out to be particularly useful for calibration purposes.

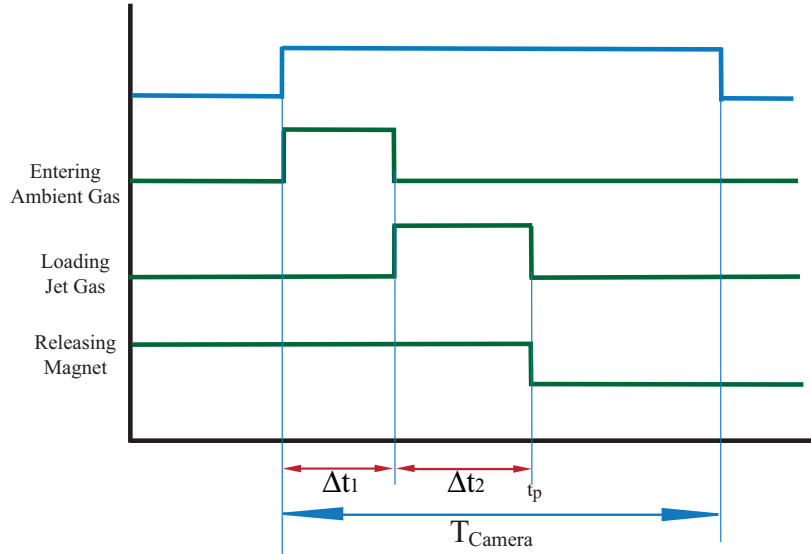


Figure 7: Time diagram of valve system, fast piston system and camera

Obviously, the curve doesn't start from zero, since the vessel is not ideal, and there is always residual air due to unavoidable small leakages. When the first timer stage acts, the first solenoid valve is opened for an interval Δt_1 and during this time ambient gas enters the vessel, so the pressure goes up from p_1 (residual air) to $p_2 = p_a$, then during the jet gas loading phase in the cylinder (Δt_2), ambient gas reaches a steady state*, and just after Δt_2 , the magnet releases the piston and, after a fast compression lasting a measurable time, the jet gas escapes through the nozzle. The jet travels through the vacuum vessel in the subsequent time interval Δt_j , also called *jet lifetime*. It can be shown that the duration of the jets in this experiment is well longer than their physical time scale, defined as the sound crossing time on a jet radius [13], so the jets may be considered nearly steady. However, on the time scale of the operating procedure their lifetime appears always much shorter than the gas loading times Δt_1 and Δt_2 . Δt_j can be estimated directly by the pressure curve as in figure 8, but the final value is safely measured from the movie, since the camera has a very good temporal resolution, working at frame rates in the order of thousands per second. The jet flow leads rapidly the pressure to the maximum value p_3 and finally, at the end of the experiment, the pressure begin to decrease again because of vacuum pumps. By pressure diagram, a complete calibration of the system can be stated. About the ambient pressure, it is almost immediate to find calibration charts in the form

$$p_a = F(p_{as}, \Delta t_1) \quad (2)$$

where p_{as} (ambient supply pressure) is the pressure fed by the ambient gas bottle. About the jet, the calibration of time Δt_2 and piston supply pressure p_s , in order to obtain a matched jet having the desired properties, is much more complicated as shown in what follows. In the throat of a de Laval nozzle, gas flow is choked, so the equation for the jet mass flow rate can be written in the ideal case by means of standard gas dynamics relations:

$$\dot{m} = A_c \rho_0 c_0 \left(\frac{2}{\gamma + 1} \right)^{\frac{1}{2} \frac{\gamma + 1}{\gamma - 1}} \quad (3)$$

where A_c is cross-sectional area of the throat whilst ρ_0 and c_0 are stagnation density and speed of sound. This formula can be rewritten in terms of stagnation pressure and temperature by means of the ideal gas law $p = \rho R_j T$:

$$\dot{m} = A_c p_0 \left(\frac{\gamma}{R_j T_0} \right)^{\frac{1}{2}} \left(\frac{2}{\gamma + 1} \right)^{\frac{1}{2} \frac{\gamma + 1}{\gamma - 1}} \quad (4)$$

*About the ambient pressure, it is worth to mention that it must be set taking account of the best working conditions for the electron gun, approximately below 20 Pa, because for higher pressures the resulting image quality may decrease remarkably.

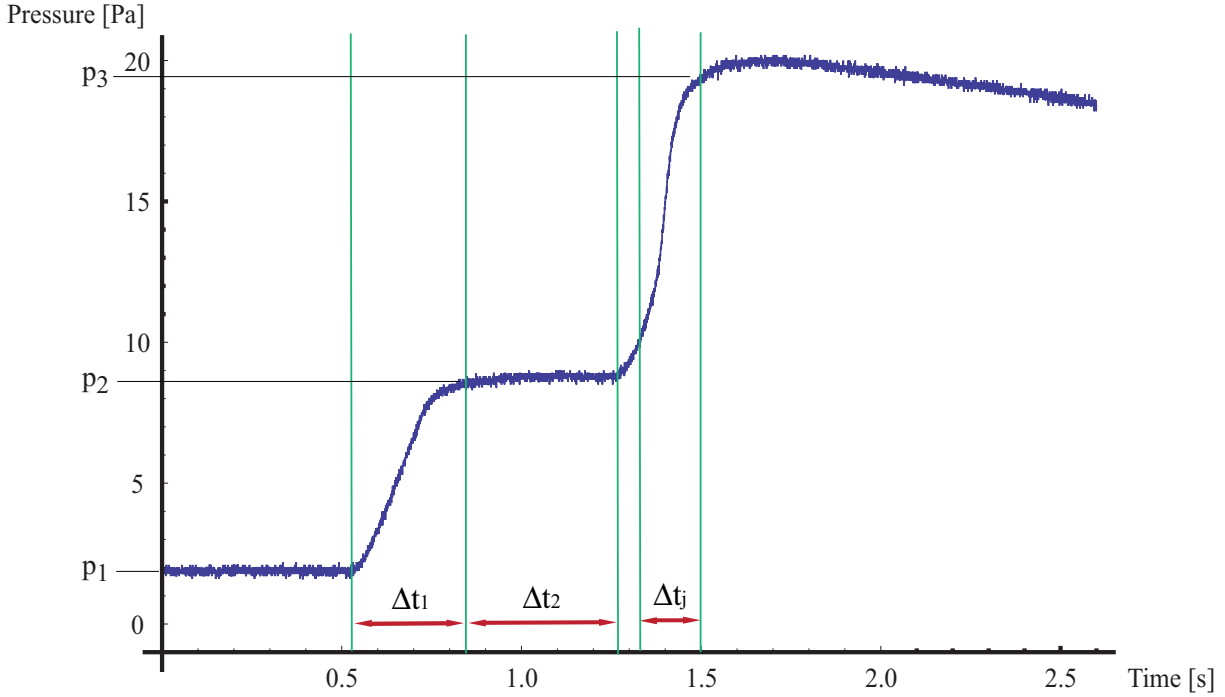


Figure 8: Pressure diagram inside the vacuum vessel during a sample run

At the end of the experiment, the jet gas is completely mixed with the ambient gas and it can be assumed that the mixture has the room temperature T_a , because the mass of the ambient gas is much greater than the one of the jet and because of the fast effect of heat radiation from the vessel walls. Thus the pressure increase due to the jet $\Delta p = p_3 - p_2$ shown in fig. 8 can be related to the density increase $\Delta \rho$ inside the vessel volume V and to the jet mass flow:

$$\frac{\Delta p}{R_j T_a} = \Delta \rho = \frac{m}{V} = \int_{\Delta t_j} \frac{\dot{m}}{V} dt \quad (5)$$

Now by replacing (4) in (5) and rearrange the formula it is found:

$$\Delta p = \frac{A_c T_a}{V} \int_{\Delta t_j} p_0 \left(\frac{R_j \gamma}{T_0} \right)^{\frac{1}{2}} \left(\frac{2}{\gamma + 1} \right)^{\frac{1}{2} \frac{\gamma + 1}{\gamma - 1}} dt \quad (6)$$

Here the crucial parameters p_0 and T_0 are not independent since they are due to the compression in the piston. For a fast ideal isentropic compression they can be related to the supply pressure p_s and temperature $T_s = T_a$, i.e. p and T of the gas loaded from the bottle into the piston,

$$T_0 = T_s \left(\frac{p_0}{p_s} \right)^{\frac{\gamma - 1}{\gamma}}. \quad (7)$$

The combination of (5) and (6) leads to:

$$\Delta p = \frac{A_c T_a}{V} \int_{\Delta t_j} p_0 \left(\frac{p_s}{p_0} \right)^{\frac{\gamma - 1}{2\gamma}} \left(\frac{R_j \gamma}{T_a} \right)^{\frac{1}{2}} \left(\frac{2}{\gamma + 1} \right)^{\frac{1}{2} \frac{\gamma + 1}{\gamma - 1}} dt \quad (8)$$

This formula shows how the final increase in vessel pressure Δp and the jet lifetime Δt_j are related to the pressure p_s of gas initially loaded into the piston and to the stagnation pressure p_0 at the end of the compression. Δp , Δt_j and p_s can be measured directly, so the formula can be used to express p_0 , which in turn depends on the gas loading time Δt_2 , and finally leads to calibration charts of the kind

$$p_0 = G(p_s, \Delta t_2) \quad (9)$$

where Δt_j doesn't appear because it is not an independent parameter, actually the jet lifetime for a given nozzle properly working depends on the quantity of gas available, which is automatically set by selecting $p_s, \Delta t_2$. Up to now, the derivation of the calibration charts was based on ideal conditions, as a further step accurate calibration charts must then be obtained including corrections for non ideal effects like small heat losses, dependence on the piston driving pressure, frictional effects and progressive opening of the piston valves, so that they take the form

$$p_0 = G(p_s, \Delta t_2, p_p, k) \quad (10)$$

where p_p is the piston driving pressure and k is a set of coefficients related to the laboratory conditions. Finally, the values of p_0 and T_0 yield pressure, temperature and density at nozzle exit, so that the calibration charts can be used to set the desired properties.

For example, first step to get an hypersonic jet is to find a good pressure ratio for a given de Laval nozzle (table 1). Then, after having set piston driving pressure and supply pressures, changing Δt_1 and Δt_2 gives different pressures for ambient and jet respectively. Typically, for a given nozzle, a set of experiments is performed changing the parameters $\Delta t_1, \Delta t_2$ whilst p_{as}, p_s and p_p are kept constants, in general they are set afresh when a new nozzle is assembled on the system. Furthermore, in a set of experiments Δt_2 can be adjusted to obtain well matched jets or even slightly unmatched jets, having a jet-to-ambient pressure ratio p_j/p_a in an approximated range 0.7 to 1.3, since the boundary layer inside the nozzles has stabilizing effects against the pressure unmatching [14]; this gives rise to interesting flow morphologies, appearing as perturbations of a properly matched jet (for slightly unmatched jets it is also possible to calculate corrections to the nominal Mach number). Bringing the pressure ratio outside of this range leads instead to the formation of strong shocks and expansions close to the nozzle exit, i.e. to definitely over- or underexpanded jets. In general, these jets are greatly affected by turbulence, so that the mixing with the surrounding ambient becomes faster than in matched jets; when this phenomenon takes place, it can be observed in the camera window.

The research project is divided in four parts; for each part a nozzle, i.e. a nominal Mach number is chosen, then density ratio is varied by selecting different gases and/or adjusting the pressure ratio. In what follows, first part is Mach 20, second Mach 15, third Mach 10, and fourth is Mach 5. The experimental procedure for each part is different from the other ones as explained below.

3.1 MACH 20 PROCEDURES

The de Laval nozzle for Mach 20 has a large diameter, so that it is necessary to put the vessel in a long configuration in order to observe jets extending for a sufficient number of initial diameters. According to table 1, matched pressure ratio p_0/p_j is close to 180000, so for a typical test at ambient pressure p_a up to 10 Pa, stagnation pressure should grow up to about 18 bar, what may create safety problems in our system. The solution is to decrease ambient pressure to the minimum value (about 1.5 Pa), but as mentioned, vacuum vessel is not ideal and at low pressures residual air becomes predominant. To overcome this problem, vessel is filled by ambient gas up to more than 20 Pa, then a timer let the vacuum pumps work for a given time, in such a way as when vessel pressure reaches again the minimum level, the residual gas can be considered almost pure ambient gas. Timer stage Δt_2 must be set in advance in order to obtain the desired jet, and after this point the general procedure described above can be followed until the experiment is completed.

3.2 MACH 15 PROCEDURES

According to table 1, the matched pressure ratio p_0/p_j for Mach 15 is about 48000, well affordable by the system in standard configuration. In this case the standard procedure described above can be followed as it stands.

3.3 MACH 10 PROCEDURES

For Mach 10 the calibration and test procedures are more complicated. The main issue is the matched pressure ratio p_0/p_j , which in this case is about 6700. One way to obtain this pressure ratio is increase ambient pressure, but there is a limitation, because by increasing the ambient pressure, the quality of images worsens. To satisfy the pressure ratio for a typical test at ambient pressure $< 10\text{Pa}$, stagnation pressure should be $< 0.7\text{bar}$, i.e. less than atmospheric pressure. This condition creates problems in the loading phase of the piston, since it becomes necessary to load low pressure gas and then recompress it to the final $p_0 < 1\text{bar}$ avoiding contamination from the surrounding ambient. To get the proper stagnation

pressures, another system has been designed. As shown in Figure 9, a small reservoir has been added to the jet gas pipe to keep inside it some amount of gas; its pressure is a bit more than atmospheric pressure. Once this reservoir is full, the valve of jet gas bottle is closed and by adjusting a precision valve connected to the vacuum pumps, the pressure of jet gas in the reservoir is reduced to the desirable one (in the order of 0.4 bar). Again, the desired pressure ratio is obtained by presetting Δt_1 and Δt_2 .

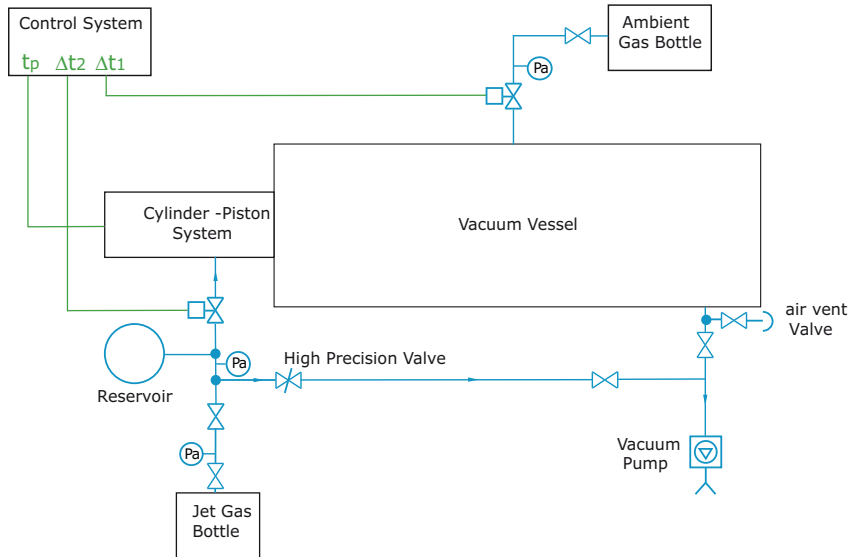


Figure 9: Sketch of modified system for Mach 10

3.4 MACH 5 PROCEDURES

The test procedures for this part are necessarily different because of the new device used instead of the piston. The setup for this case is shown in Figure 10. At first the reservoir is emptied by opening

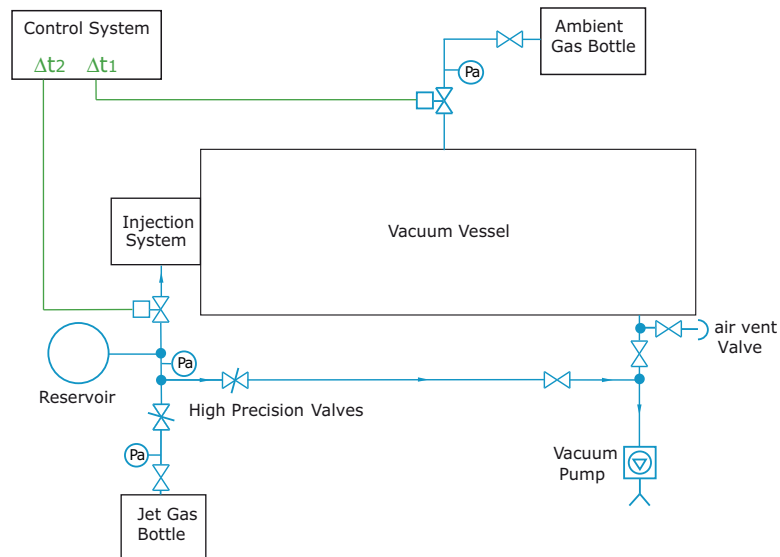


Figure 10: Sketch of modified system for Mach 5

the valve connected to the vacuum pump, then the test gas enters the reservoir increasing the pressure up to levels in the order of 0.3 bar by means of a high precision valve. When the pressure inside the reservoir satisfies the pressure ratio, the experiment can be started. In this procedure, the timer stage

Δt_1 sets the ambient as before, but the stage Δt_2 controls directly the injection, i.e. the gas flows through the injector for the time Δt_2 , then the flow is interrupted. Jet duration is thus directly set by the opening time of the valves connected to the injector. In this case the third timer stage is not used. At the time of writing this report, the first tests of this injector are in progress.

4 RESULTS

In this section, we present some sample results obtained by the present experimental system. Figure 11 shows the head of a xenon jet traveling in an argon ambient, it is a matched jet obtained by setting a stagnation/ambient pressure ratio $p_0/p_a = 5.17 \cdot 10^4 \pm 10\%$ and an ambient pressure $p_a = 10.5 \pm 0.1\text{Pa}$. These parameters lead to a nearly matched jet having at the nozzle exit a Mach number $M = 15.1$ and a density ratio $\eta = 77$, thus the jet is highly *overdense* in comparison with the surrounding ambient. The jet structure visible in figure 11 may be interpreted as follows [2]: the jet head is made of a bow shock, traveling left to right, clearly visible in figure, followed by a terminal shock much smaller than the bow shock, and in this case very close to it, so that it cannot be resolved in the image. On the right of the bow-terminal shock structure, only the unperturbed ambient gas is visible; on the left of this structure, the jet core is clearly visible, it is made of xenon traveling at a velocity v_g which can be estimated about (560 ± 20) m/s. This velocity is larger than the one of the shock structure $v_h = (210 \pm 50)$ m/s, measured by correlation techniques, so that the jet gas, after being decelerated by the terminal shock, is deflected sideways and form a small backward flowing region behind the bow shock, the so-called *cocoon*, which then mixes with the ambient gas. Since the velocity of the head structure is known, two images in succession can be superimposed after shifting the second one by the displacement of the structure under study. Then, this procedure can be repeated, so that a reconstruction of a part of the jet structure can be done by superimposing parts of adjacent frames, obtaining an image larger than what the camera window allows. This method is used for all the figures in this section; of course, it has a physical meaning only if the changes in structure properties are slow in comparison with the interframe time.

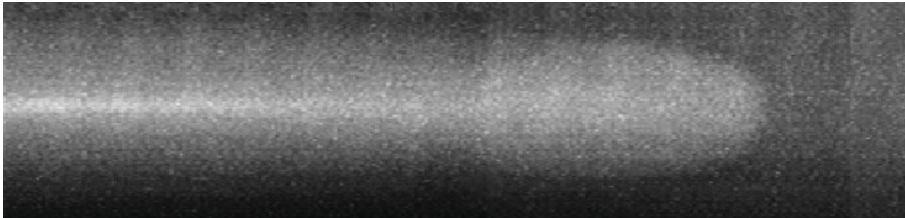


Figure 11: Head region of a heavy jet, Xenon in Argon at $M = 15.1$, density ratio $\eta = 77$. The vertical size of the image is $340\text{mm} = 9.5$ nozzle radii.

The images presented here come from a movie made of 150 frames taken at 4300 frames per s, an outline of the movie converted in reconstructed parts of the jet is presented in figure 12. Frame 15 to 30, as in figure 11, show the morphology of this jet as a free flow, i.e. practically not perturbed by the walls effects. After image 30, the jet head impacts the vessel end, so that a strong backflow is generated and the flow inside the vessel becomes a jet surrounded by a coaxial stream flowing backward (this is not a naturally backward flow like the cocoon). Under these conditions, the interface between the two flows becomes unstable, so that strong waves appear, they move forward at high velocities $v_i > v_h$ and are particularly visible in the frames 61 to 90.

Figure 13 shows a helium jet traveling in a xenon ambient, it is a slightly unmatched jet obtained by setting a stagnation/ambient pressure ratio $p_0/p_a = 3.88 \cdot 10^4 \pm 20\%$ and an ambient pressure $p_a = 10.0 \pm 0.1\text{Pa}$. These parameters lead to a jet having at the nozzle exit a Mach number $M = 13.4$ and a density ratio $\eta = 0.9$, thus the jet is slightly *underdense* in comparison with the surrounding ambient. This jet has a Mach number close to the one of figure 11, but the density ratio is much lower than in that case, what changes the jet morphology deeply. Figure 13 is obtained by the superposition technique explained above, and refers to the free jet behaviour, i.e. before the impact with the vessel end. It has the same scale of figure 11. Here the shape of the terminal/bow shock structure is remarkably different from the previous case, owing to the heavy xenon ambient which contrasts the light jet advancing. Furthermore, the backward flowing cocoon becomes very large in comparison with the size of the jet core, which is now surrounded in turn by a region of fast expanded jet gas (dark in the image) and by an

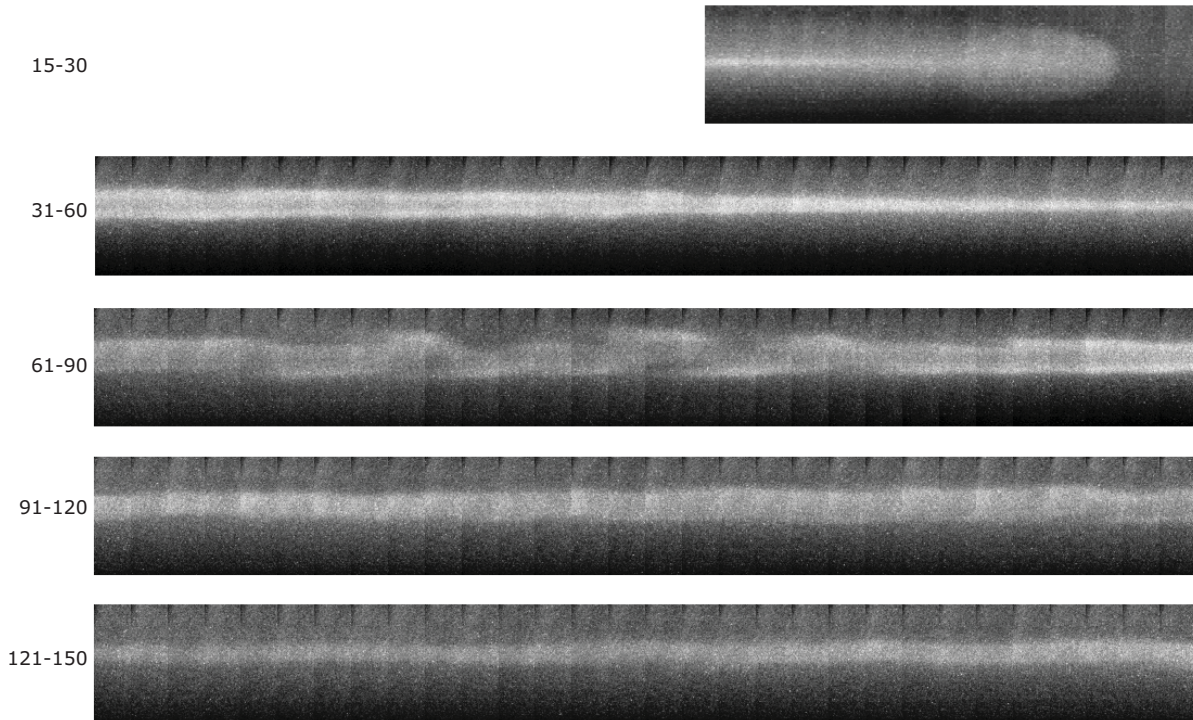


Figure 12: Sequence of reconstructed images for the heavy jet Xe in Ar at $M = 15.1$, $\eta = 77$ obtained as superpositions of scaled correlated frames from the original movie. The numbers on the left refer to the frame positions in the movie.

unstable interface between jet gas and ambient gas. Here also the velocities are very different from the overdense jet case, actually the core gas velocity v_g can be estimated about (3200 ± 300) m/s, whilst the measured value of the head structure is $v_h = (350 \pm 50)$ m/s, so the ratio v_g/v_h is much higher in this case.

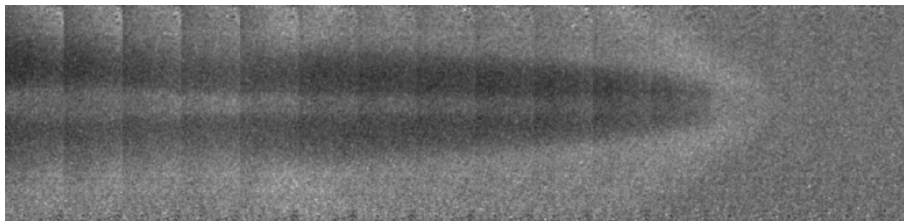


Figure 13: Head region of a light jet, helium in xenon at $M = 13.4$, density ratio $\eta = 0.9$. The vertical size of the image is the same as in fig. 11, 340mm = 9.5 nozzle radii.

Figure 14 shows a helium jet traveling in a xenon ambient, it is a nearly matched jet obtained by setting a stagnation/ambient pressure ratio $p_0/p_a = 6.61 \cdot 10^3 \pm 10\%$ and an ambient pressure $p_a = 5.1 \pm 0.1$ Pa. These parameters lead to a jet having at the nozzle exit a Mach number $M = 9.9$ and a density ratio $\eta = 0.8$, thus the jet is again underdense, with a density ratio close to the one of the jet in figure 13, but a slower Mach number. This figure has the same scale of figures 11 and 13. The lower Mach number leads to a new change in the jet morphology. Here the general morphology of the terminal/bow shock structure appears similar to the one in figure 13, but the profile of the bow shock is blunter than in the previous case, as it can be expected for a lower Mach number. Furthermore, the size of the cocoon, if compared with the size of the jet core, is even larger than in previous case, again this is an expected effect of the lower Mach number [13, 15]. In this case the core gas velocity v_g can be estimated about (2200 ± 200) m/s, whilst the measured value of the head structure is $v_h = (280 \pm 50)$ m/s.

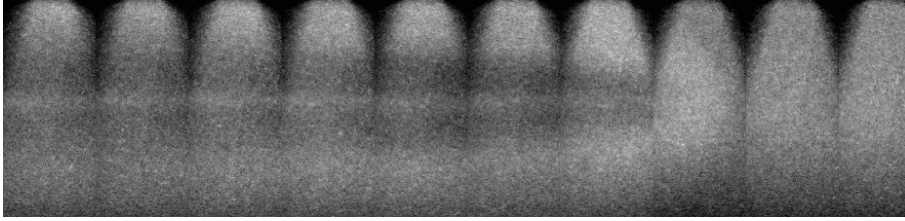


Figure 14: Head region of a light jet, helium in xenon at $M = 9.9$, density ratio $\eta = 0.8$. The vertical size of the image is the same as in fig. 13, 340mm = 28.3 nozzle radii in this case.

5 CONCLUSIONS

The whole facility is reliable in the different configurations and usable in a wide range of Mach Numbers. The use of matched or quasi-matched de Laval nozzles allows to have rather well known boundary conditions of the jets. The calibration procedures developed for the different Mach Numbers are also reliable, so that the set of experiments may be further carried on following the ones yet conducted, where the whole set of experimental conditions is well and clearly defined. Thanks to the geometry of the devices for the jet generation, even the repeatability of each experiment is very good.

The distance of observation, as referred to the initial jet diameter, is far larger than any of the available experiment and is in the range of stellar jets, while it is not the only purpose of these facilities, as shown e.g. in [6]. Although real stellar jets are not generated in this way, the development of the jets and of the observed instabilities in form of "knots" are not related to boundary conditions but are part of the jet development itself. Both overdense and underdense jets may be simulated in a wide range of density ratios and this has allowed to have an insight in the change both in jet and cocoon structures, and also in the instabilities that appear on streams interfaces. The fact that the jet structure is persistent even after the impact on the vessel end, although is not part of the stellar jets effort of simulations, is interesting as it is a new piece of knowledge.

About the results, it has been shown that many of the facets of stellar jets may be simulated in a pure fluid dynamic experiment, without the need of electromagnetic fields, what is an important issued in astrophysics [13]. Although the quality of the images is not so good as desirable, due to the camera limits, they may be elaborated to get enough data, while the use of a camera with higher performances is the most urgent further development of the experimental setup.

REFERENCES

- [1] Ferrari A.: Modeling extragalactic jets, *Annual Rev. Astron. & Astrophys.* **36** 539, 1998
- [2] Gouveia Dal Pino E.M.: Astrophysical jets and outflows, *Advances in Space Research* **35** 908–924, 2005
- [3] Bellan P.M., Livio M., Kato Y., Lebedev S.V., Ray T.P., Ferrari A., Hartigan P., Frank A., Foster J.M., Nicolai P.: Astrophysical jets: Observations, numerical simulations, and laboratory experiments, *Phys. Plasmas* **16** 4, 2009
- [4] Belan M., Tordella D., De Ponte S.: A system of fast acceleration of a mass of gas for the laboratory simulation of stellar jets, 19th ICIASF, Cleveland, August 27-30, 2001
- [5] Belan M., De Ponte S., Massaglia S., Tordella D.: Experiments and numerical simulations on the mid-term evolution of hypersonic jets, *Astrophys Space Sci* 293 (1-2): 225-232, 2004
- [6] Belan M., De Ponte S., Tordella D.: Determination of density and concentration from fluorescent images of a gas flow, *Exp. Fluids* **45** 501511, 2008
- [7] Belan M., De Ponte S., Tordella D.: Highly underexpanded jets in the presence of a density jump between an ambient gas and a jet, *Physical Review E* **82** 026303, 2010
- [8] Roth A.: *Vacuum Technology*, North-Holland Elsevier, 1990

- [9] Bakish R., Wiley J. & Sons: Introduction to Electron Beam Technology, NY, 1962
- [10] Brown L.O., Miller N.: α -Ray induced luminescence of gases, Trans. Faraday Soc. 53: 748, 1957
- [11] Muntz E.P.: The electron beam fluorescence technique, AGARDograph 132, 1968
- [12] Bütetfisch K.A, Vennemann D.: The electron-beam technique in hypersonic rarefied gas dynamics, Prog Aer Sci 15: 217-255, 1974
- [13] Tordella D., Belan M., Massaglia S., De Ponte S., Mignone A., Bodenschatz E, Ferrari A.: Astrophysical jets: insight into long term hydrodynamics, New J of Physics 13, 043011, 2011
- [14] Huzel D.K., Huang D.H: Design of liquid propellant rocket engines, NASA report SP-125, 1967
- [15] Massaglia S., Bodo G., Ferrari A.: Dynamical and radiative properties of astrophysical supersonic jets I. Cocoon morphologies, Astron & Astrophys **307** 997, 1996